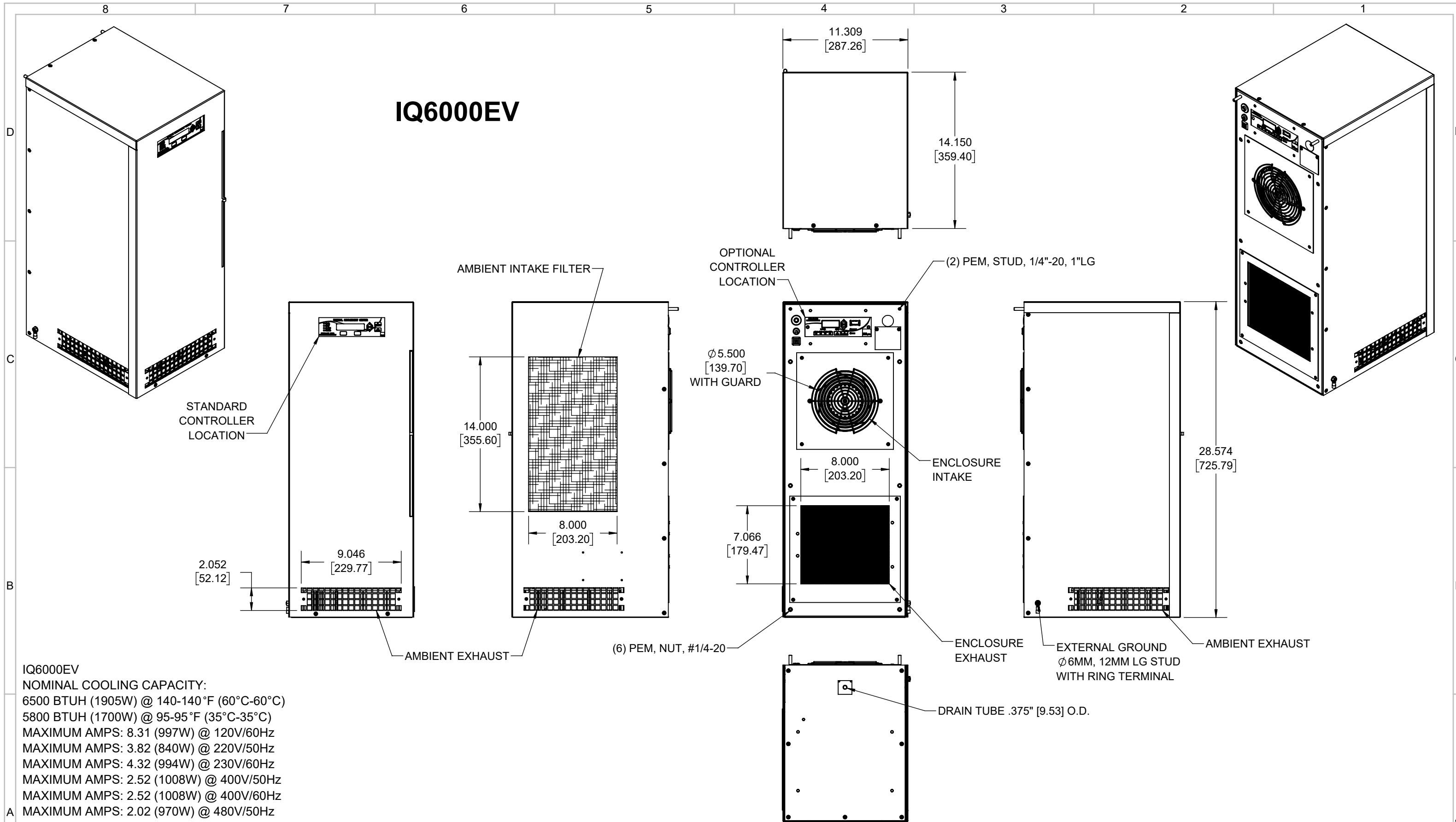


IQ6000EV



IQ6000EV
 NOMINAL COOLING CAPACITY:
 6500 BTUH (1905W) @ 140-140°F (60°C-60°C)
 5800 BTUH (1700W) @ 95-95°F (35°C-35°C)
 MAXIMUM AMPS: 8.31 (997W) @ 120V/60Hz
 MAXIMUM AMPS: 3.82 (840W) @ 220V/50Hz
 MAXIMUM AMPS: 4.32 (994W) @ 230V/60Hz
 MAXIMUM AMPS: 2.52 (1008W) @ 400V/50Hz
 MAXIMUM AMPS: 2.52 (1008W) @ 400V/60Hz
 MAXIMUM AMPS: 2.02 (970W) @ 480V/50Hz
 MAXIMUM AMPS: 2.11 (1013W) @ 480V/60Hz
 MAXIMUM OPERATING TEMPERATURE: 140°F (60°C)
 DIMENSIONS: 28.584" (726MM) H x 11.309" (287MM) W x 14.150" (359MM) D
 WEIGHT: 97.5 LBS (44.2KG) @ 120/220/230V
 WEIGHT: 117.5 LBS (53.3KG) @ 400/480V
 REFRIGERANT CHARGE: R134-A 28OZ (794G)

REV	DESCRIPTION	CHG	DATE	APP	DATE	CN #
G	ADDED CFM, dBA, AND CLEARANCE INFO	RCC	3/22/2018	ART	5/11/2018	1347
F	UPDATED UNIT DATA	JGG	12/15/2017	ART	12/15/2017	1336

ITEM NUMBER	N/A	USED ON	IQ6000EV
MATERIAL	N/A		
EST WT:	lbs		
DRAWN BY	ART	DATE	1/20/2016
		SCALE	1:8

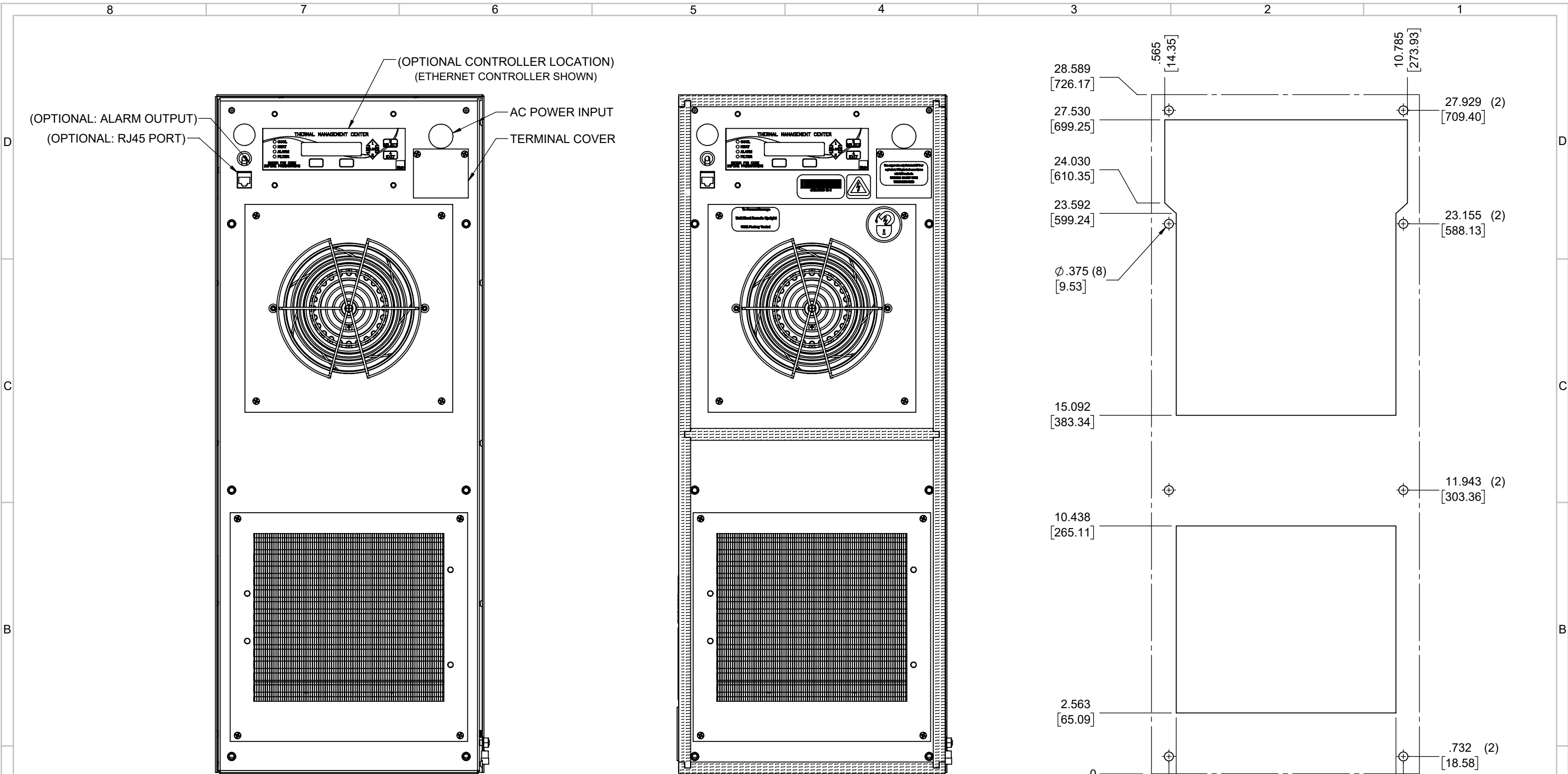
UNLESS OTHERWISE SPECIFIED TOLERANCES	
.X	±.060
.XX	±.030
.XXX	±.015
FRACTIONAL	±1/16
ANGULAR	±1/2°
SURFACE FINISH $\sqrt{63}$	
DO NOT SCALE DRAWING DIMENSIONS ARE INCHES	

ICE QUBE, INC.
 THIS IS A PROPRIETARY DOCUMENT. DO NOT REPRODUCE OR DISCLOSE WITHOUT THE EXPRESS WRITTEN PERMISSION OF ICE QUBE, INC.

DESCRIPTION
IQ6000EV SPEC DRAWING

DRAWING NUMBER
IQ350929

REV
G



IMPORTANT
GASKET MUST BE APPLIED AS SHOWN FOR PROPER OPERATION AND TO MAINTAIN ENCLOSURE INTEGRITY

EVAP. OUTLET ≈ 360 CFM
 COND. OUTLET ≈ 510 CFM
 SOUND LEVEL @5FT FROM UNIT @ A HT. OF 3FT = 62 dBA
 SOUND LEVEL @2FT FROM UNIT @ A HT. OF 5FT = 65 dBA
 CONDENSER INLET MIN. CLEARANCE 2.54"

ITEM NUMBER N/A	USED ON IQ6000EV	UNLESS OTHERWISE SPECIFIED TOLERANCES X ±.060 XX ±.030 XXX ±.015	 ICE QUBE, INC. <small>THIS IS A PROPRIETARY DOCUMENT. DO NOT REPRODUCE OR DISCLOSE WITHOUT THE EXPRESS WRITTEN PERMISSION OF ICE QUBE, INC.</small>
MATERIAL N/A		FRACTIONAL ±1/4 ANGULAR ±1/2°	
EST WT: DRAWN BY ART	DATE 1/20/2016	SCALE 1:4	DESCRIPTION IQ6000EV SPEC DRAWING DRAWING NUMBER IQ350929
		DO NOT SCALE DRAWING DIMENSIONS ARE INCHES	REV G